



RECP #: 754602

RECORDED 6/5/2019 AT 3:37 PM BK# 2624 PG# 271  
Debra K. Lee, CLERK OF LARAMIE COUNTY, WY PAGE 1 OF 1

# STATE OF WYOMING CORNER RECORD

(In compliance with the CORNER PERPETUATION AND FILING ACT, Wyoming Statutes, 1997 Section 33-29-140, et. seq., and the Rules and Regulations of the Board of Registrations for Professional Engineers and Professional Land Surveyors)

## SOUTHWEST CORNER SECTION 12, T. 17 N., R. 62 W., 6TH P.M., LARAMIE COUNTY, WYOMING

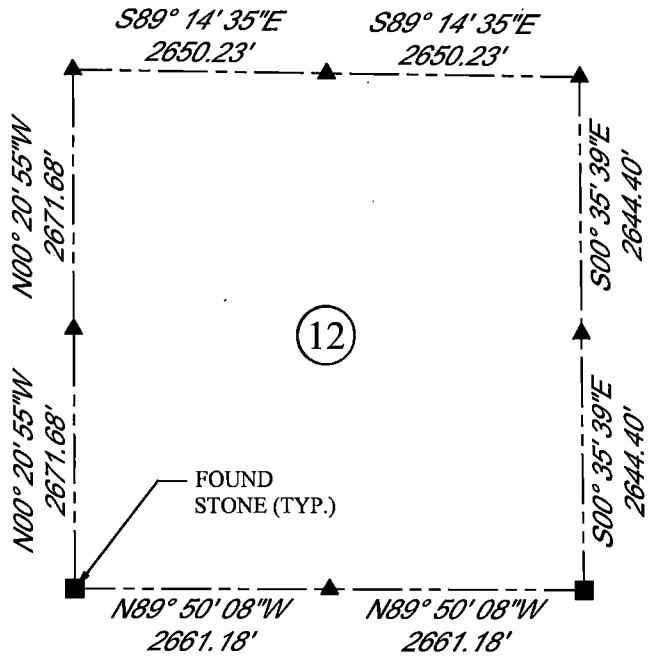
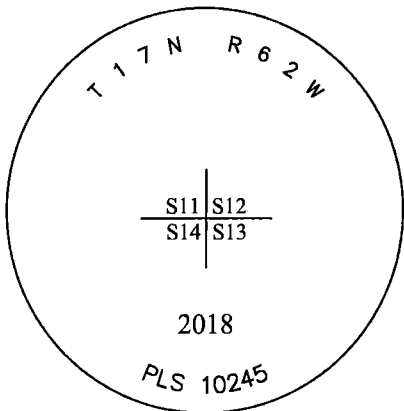
**GLO:** SANDSTONE 20X20X8 SET 12 IN DEEP MARKED WITH 4 NOTCHES ON S SIDE AND 1 NOTCH ON E SIDE FOR COR. TO SECT. 11, 12, 13, 14.

**FOUND:** LOOSE SANDSTONE IN FENCE LINE. APPROXIMATE DIMENSIONS BEING 21X17X4.

**SET:** 3.25" ALUMINUM CAP ON #5 REBAR, 6" ABOVE SURFACE, MARKED AS SHOWN, APPROX 84' SOUTH OF THE S AND W FENCE CORNER.



SCALE: NONE  
NORTH DETERMINED BY  
G.P.S OBSERVATIONS



### LEGEND:

- FOUND BLM CAP
- FOUND USFS CAP
- FOUND STONE
- FOUND PRIVATE MONUMENT
- ◆ CALCULATED POSITION
- ▲ SET MONUMENT (LS10245)
- SECTION LINE

DATE OF FIELD WORK: 09/20/2018 OFFICE REFERENCE: MERIDEN

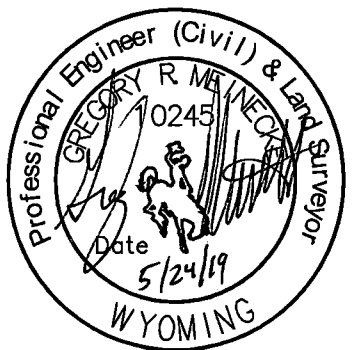
### CROSS INDEX DIAGRAM

	1	2	3	4	5	6	7	8	9	10	11	12	13	14	15	16	17	18	19	20	21	22	23	24	25
A																									
B																									
C		6		5		4		3		2		1													
D																									
E																									
F																									
G		7		8		9		10		11		12													
H																									
J																									
K																									
L		18		17		16		15		14		13													
M																									
N																									
O		19		20		21		22		23		24													
P																									
Q																									
R																									
S		30		29		28		27		26		25													
T																									
U																									
V																									
W																									
X		31		32		33		34		35		36													
Y																									
Z																									

WOOD  
2615 AVIATION DRIVE  
SHERIDAN, WY 82801  
PH: 307-675-6400



THIS CORNER RECORD WAS  
PREPARED BY ME OR UNDER  
MY DIRECTION AND  
SUPERVISION,  
SEAL AND SIGNATURE



CORNER NAME: SOUTHWEST SECTION: 12 T. 17N., R.62 W. ; 6TH P.M. CROSS-INDEX # J-21

SRPELS/PLSW: MARCH 1994; PLSW JANUARY 1998